

REPAIR AND OVERHAUL INSTRUCTIONS

CARBURETTOR AIR DUCTING REPAIR

EQUIPMENT AFFECTED:

Expeditor Aircraft

1 After several removals and replacements of the air intake elbow and the forward air duct the mating parts are apt to become stretched and cracked and exceedingly difficult to fit. Rejuvenation of these parts may be effected by employing the following repair scheme:-

(a) Trim off the forward end of the elbow to the same extent it fits into the mating air duct.

(b) Fabricate a strip of light alloy approximately .750 inches wide of the same gauge as the elbow material and rivet around the for-

ward end of the elbow to bring its outside diameter to the same dimensions as that of the aft end of the forward air duct.

(c) Fabricate two strips of next heavier gauge metal 1.50 inches wide, shaped as shown in Figure 1, and rivet one to forward air duct, one to the elbow so that they mate when placed together as shown in Figure 2.

(d) Using a #12 drill, drill a hole diametrically through the mid-section of the collar and fitted parts. Install an AN-3 bolt of adequate length to fit through ducting and secure with an AN365-1032 nut.

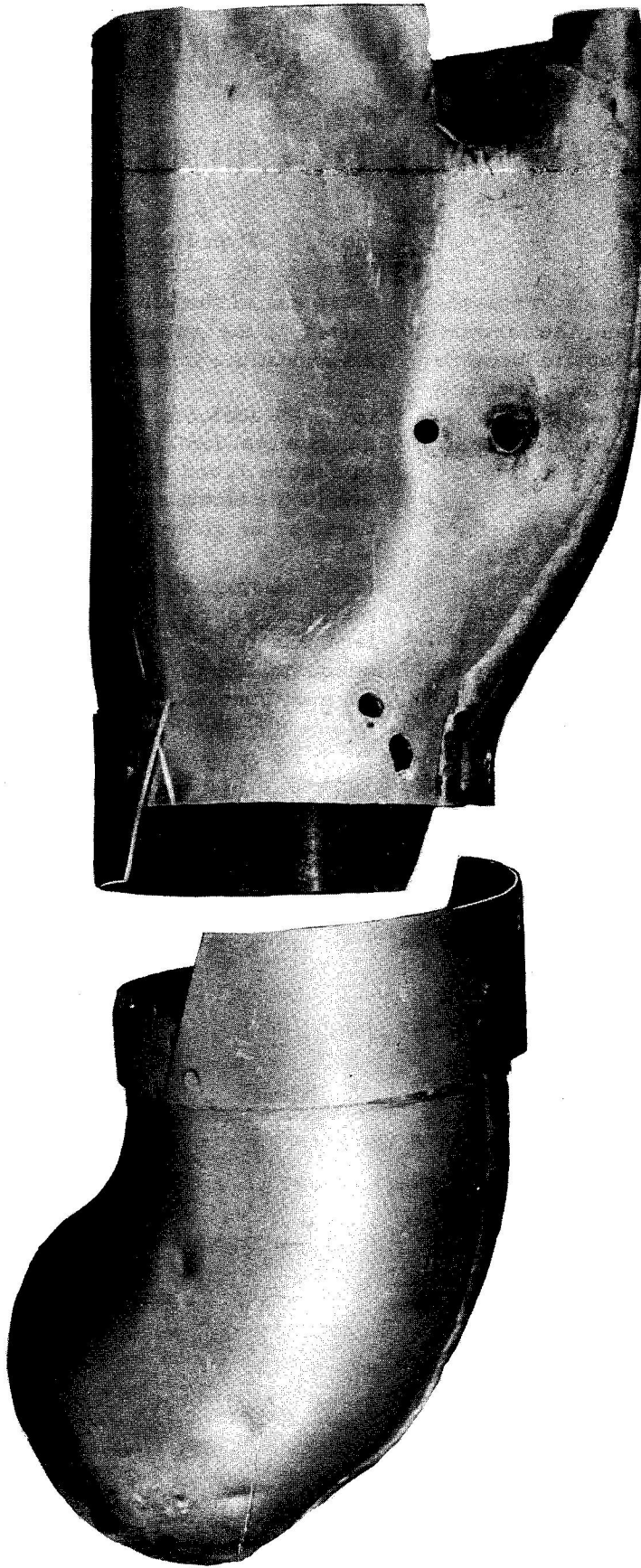


Figure 1

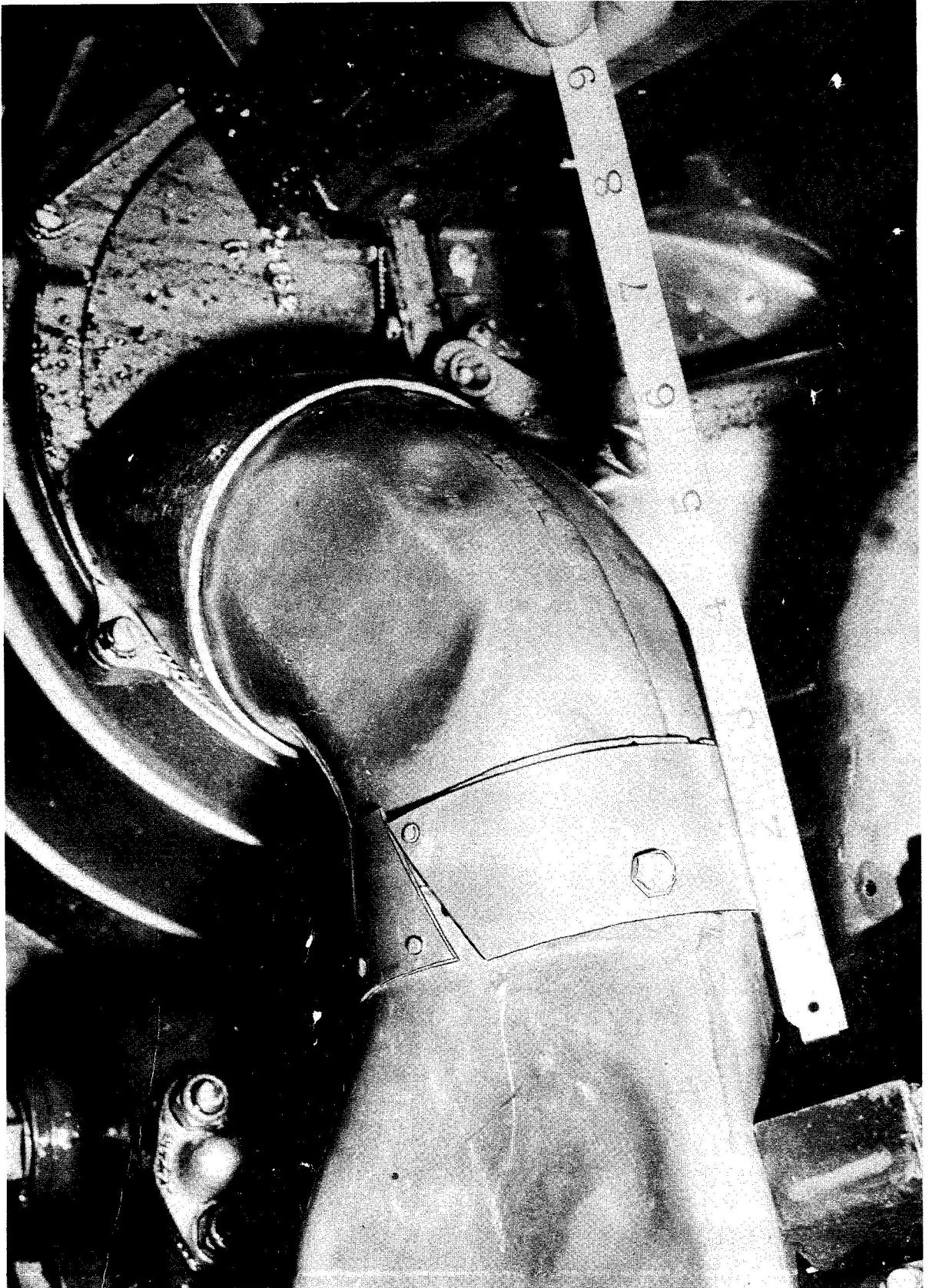


Figure 2

Prepared By:
AMC/SACO/ACR

ISSUED ON AUTHORITY OF THE CHIEF OF THE AIR STAFF

